

AMENDED MAP OF

# THE HOUSTON BARNARD SUBDIVISION

OF PART OF LOT NO. 5, 2<sup>ND</sup> DIV. T. 13, R. 7, TOWN OF BRIGHTON, MONROE CO., LA.

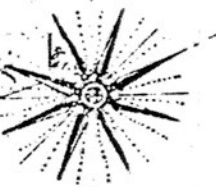
Showing stone monuments set and measurements made of ± distances. All lot lines are the same as on the original map, except where original lines are shown thus: ... represent stone monuments set. The Abram F. Nellis subdivision being Lots 160 to 206 inclusive is shown merely to give the correct relation between the two tracts.

Scale 160' = 1"

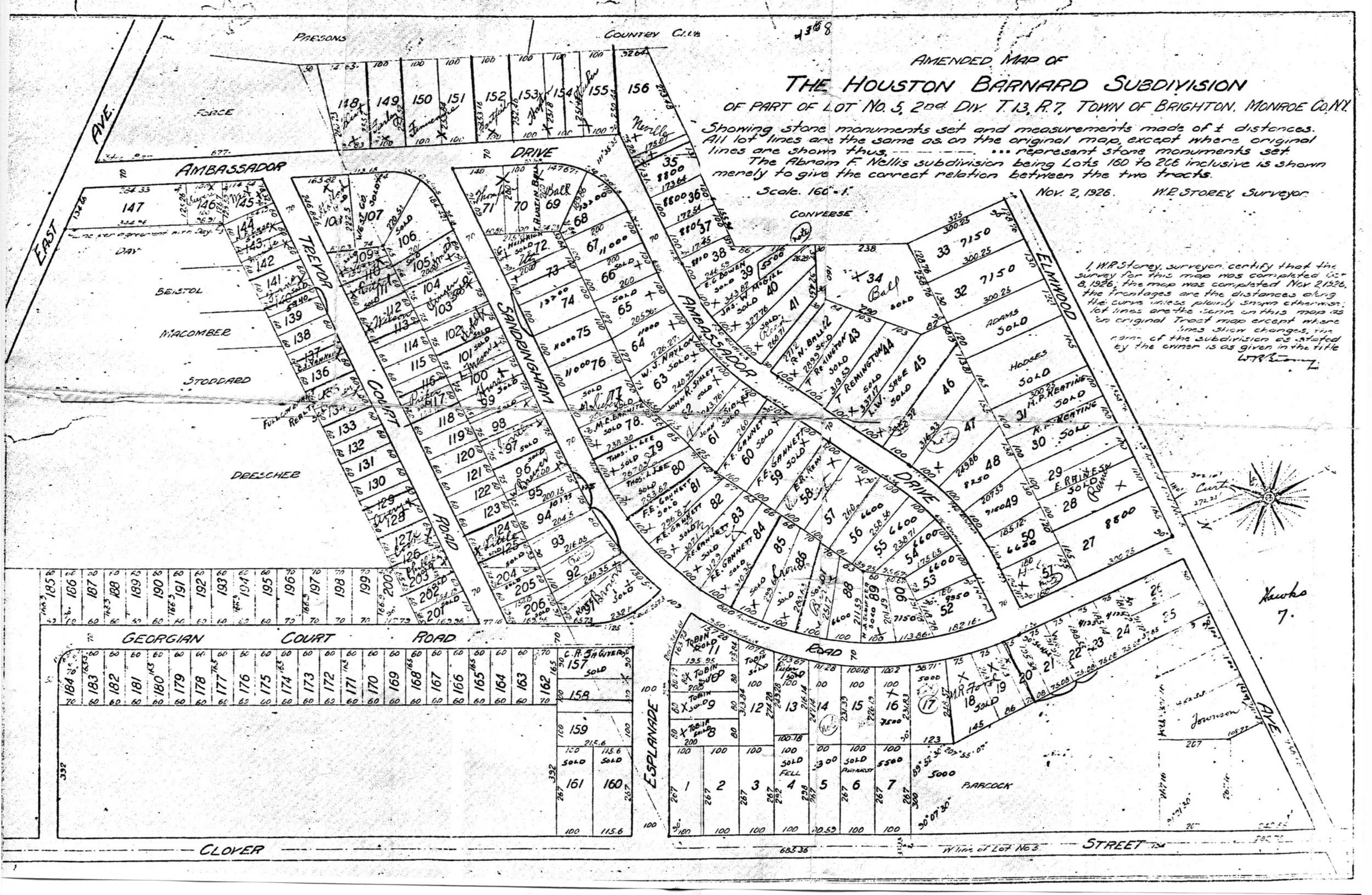
Nov. 2, 1926.

W. R. STOREY, Surveyor

I, W. R. Storey, surveyor, certify that the survey for this map was completed Oct. 8, 1926; the map was completed Nov. 2, 1926; the frontages are the distances along the curve unless plainly shown otherwise; lot lines are the same on this map as in original Tract map except where lines shown changes; the name of the subdivision as stated by the owner is as given in the title.



Kawka 7.



118	149	150	151	152	153	154	155	156
117	146	145	144	143	142	141	140	139
138	137	136	135	134	133	132	131	130
129	128	127	126	125	124	123	122	121
120	119	118	117	116	115	114	113	112
111	110	109	108	107	106	105	104	103
102	101	100	99	98	97	96	95	94
93	92	91	90	89	88	87	86	85
84	83	82	81	80	79	78	77	76
75	74	73	72	71	70	69	68	67
66	65	64	63	62	61	60	59	58
57	56	55	54	53	52	51	50	49
48	47	46	45	44	43	42	41	40
39	38	37	36	35	34	33	32	31
30	29	28	27	26	25	24	23	22
21	20	19	18	17	16	15	14	13
12	11	10	9	8	7	6	5	4
3	2	1						

185	186	187	188	189	190	191	192	193	194	195	196	197	198	199	200	201	202	203	204	205	206	
184	183	182	181	180	179	178	177	176	175	174	173	172	171	170	169	168	167	166	165	164	163	162
161	160	159	158	157	156	155	154	153	152	151	150	149	148	147	146	145	144	143	142	141	140	
139	138	137	136	135	134	133	132	131	130	129	128	127	126	125	124	123	122	121	120	119	118	
117	116	115	114	113	112	111	110	109	108	107	106	105	104	103	102	101	100	99	98	97	96	
95	94	93	92	91	90	89	88	87	86	85	84	83	82	81	80	79	78	77	76	75	74	
73	72	71	70	69	68	67	66	65	64	63	62	61	60	59	58	57	56	55	54	53	52	
51	50	49	48	47	46	45	44	43	42	41	40	39	38	37	36	35	34	33	32	31	30	
29	28	27	26	25	24	23	22	21	20	19	18	17	16	15	14	13	12	11	10	9	8	
7	6	5	4	3	2	1																

CLOYER STREET 154