

ARCHITECTURE
AND
ARCHITECTS
OF
ROCHESTER, N.Y.
BY
CARL AND ANN SCHMIDT

PUBLISHED BY THE
ROCHESTER SOCIETY OF ARCHITECTS
1959
COPYRIGHT 1959 BY CARL AND ANN SCHMIDT

vania, April 17, 1912. He studied at Drexel Institute of Technology. He has been employed in the offices of Wenner and Fink, and the Eastman Kodak Company.

HOWARD F. GALVIN worked in the offices of Oberlies and Lorenz, and George Lorenz in the 1920's. He is now at the Camera Works.

GARBUTT and SALTER conducted an office in 1899 and 1900.

LESTER H. GARDNER, a native of Boston, Mass., was born in 1901. He studied at Columbia University. Lester has been with Gordon and Kaelber, Neisner Brothers, Carl Ade and is now at the Eastman Kodak Company.

GEORGE W. H. GIBBS had an office in the Smith Block from 1857-1861.

ELMER GILLETTE was born in Rochester, N. Y. He started to work in the office of J. Mills Platt in 1917. Elmer has been employed in the offices of Gordon and Kaelber, Charles Carpenter, Frank Quinlan, and is now with Neisner Brothers.

DANIEL F. GIROUX was born in Saranac Lake, N. Y., September 1922. He graduated from Syracuse University. He has been employed in the offices of King and King of Syracuse, Ade and Todd, and Conway Todd. In 1958 the firm of Todd and Giroux was organized. (see Todd and Giroux). A.I.A., R.A., R.S.A.

HENRY B. GLEASON conducted an architectural office in Rochester from 1878 to 1896.

ROBERT A. GOEHRINGER is a native of Rochester, N. Y., born August 26, 1917. He studied at R. I. T., and has been employed at the Eastman Kodak Company, DiClemente and Volk, and Faragher and Macomber.

GORDON G. GOFF, a native of Rochester, N. Y., was born in 1921. He has been employed in the following offices: Kaelber and Waasdorp, Bausch and Lomb Optical Co., Neisner Brothers, and is now with the Eastman Kodak Company.

SUZANNE GOODRICH. R.S.A. 1958.

EDWIN S. GORDON was born in Rochester, N. Y., March 28, 1867. He received his early training in the offices of Fay and Dryer and James G. Cutler. In 1891 he was one of the members of the young firm, Bragdon, Gordon and Orchard. This was followed by eight years of drafting in the office of J. Foster Warner. In 1902 he formed a partnership with William Madden who was also a draftsman for Warner. Their first office was in the Triangle Building. This partnership was dissolved during the war years of 1917 and 1918. (see Gordon and Madden). After the war the firm of Gordon and Kaelber was organized and became Rochester's largest office, who during the latter 1920's employed more than forty draftsman. Edwin S. Gordon died April 6, 1932 and William Kaelber continued the office. F.A.I.A., R.S.A., R.A.

GORDON and MADDEN 1902-1918. They were the architects for St. Stanislaus Church, Corpus Christi Church, Blessed Sacrament Church, Rochester Dental Dispensary, First Church of Christ Scientist on East Avenue, S. S. Peter and Paul Church, Schools number 14 and 22, and Jefferson High School.

GORDON and KAELBER 1919-1932. They were the architects for the University of Rochester; Madison High School; Monroe High School; Second Church of Christ, Scientist; Medical Arts Building; McFarlin Clothing Store; Lincoln Building; Cutler Union Building; Benjamin Franklin High School; The Eastman Theatre and School of Music; and the Rochester Gas and Electric Building in association with McKim, Meade and White; and the Hiram Sibley Building in association with Rutan, Bullfinch and Abbott; Democrat and Chronicle Building; and the Women's Dormitory, University of Rochester on University Avenue.

STEWART GORDON, son of Edwin Gordon, was born in

Material from:
Rochester Public Library
115 South Avenue
Rochester, NY 14604

Item # //
Page # 3
Report Date: MAR 21 2005



Col. R. W. Allen, Architect



JOHN J. CLINGEN ESQ.
40 SANDRINGHAM ROAD, BRIGHTON, N. Y.

JOHN J. CLINGEN ESQ.
SANDRINGHAM ROAD, BRIGHTON, N.Y.

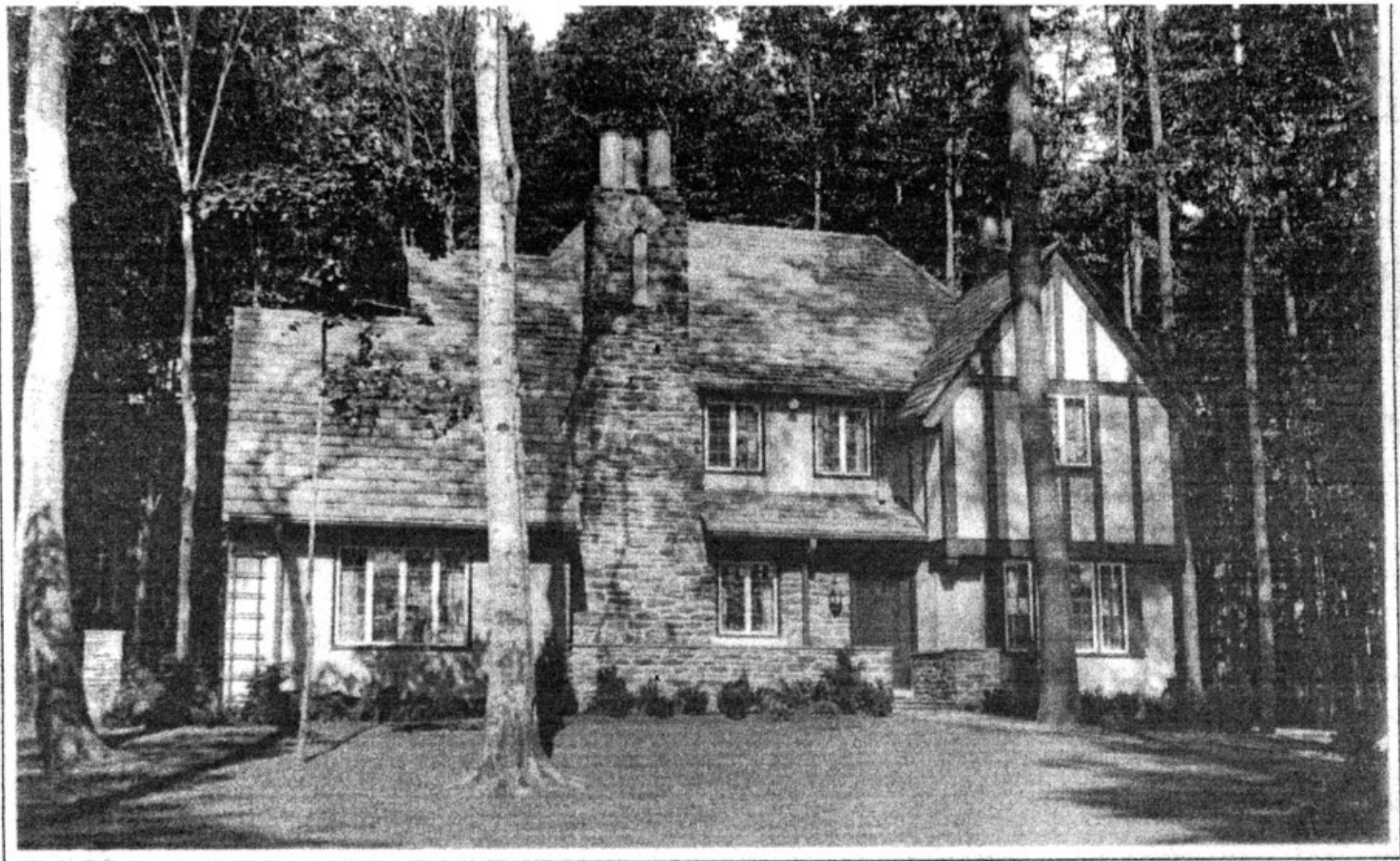




MR. WILLIAM C. DALEY
80 AMBASSADOR DRIVE, BRIGHTON, N. Y.



EARL J. NEVILLE ESQ.
199 AMBASSADOR DRIVE, BRIGHTON, N. Y.



Mr. LeRoy A. Robes
Knollwood Drive, Pittsford, N.Y.



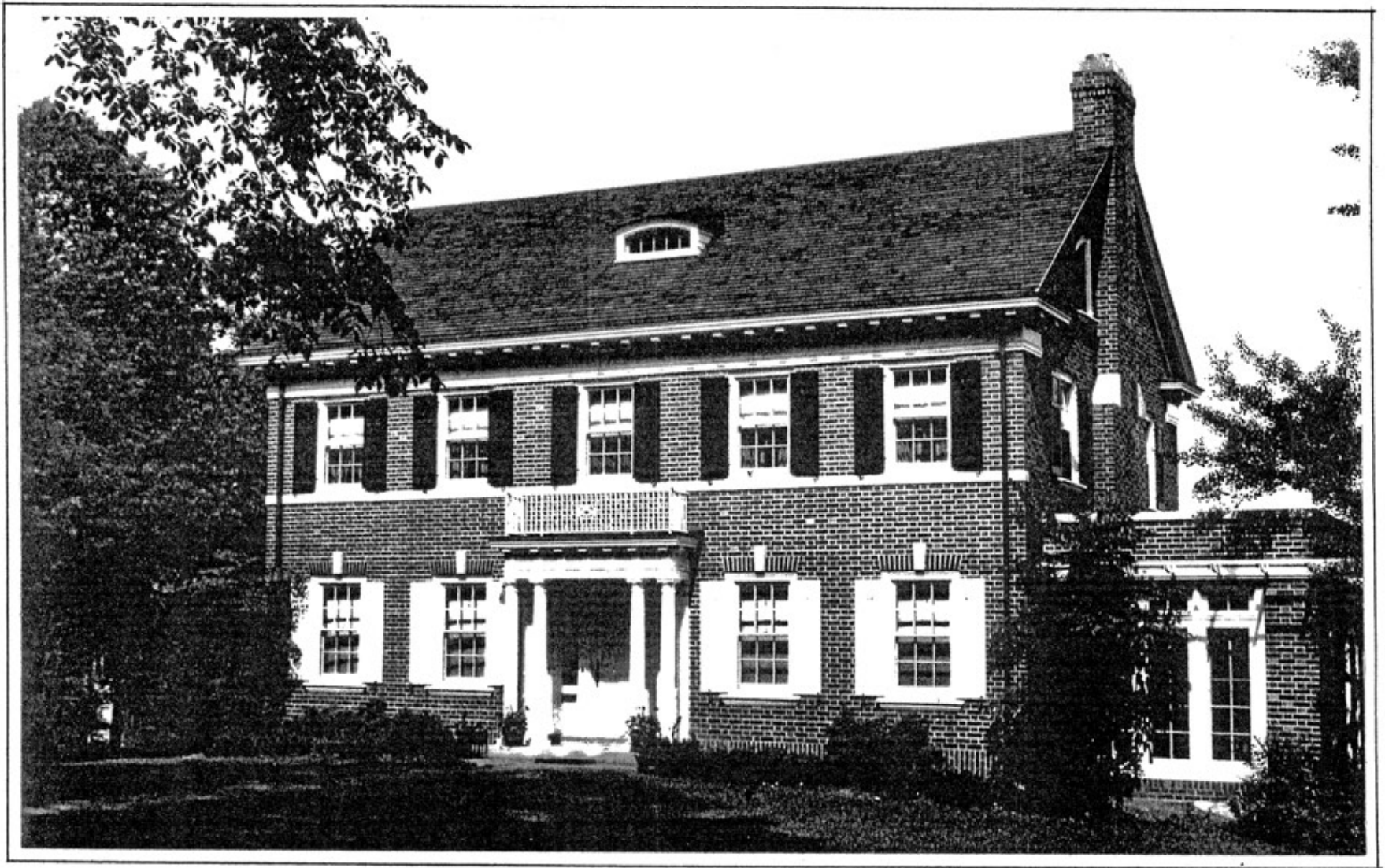
FL Higgins
191 TREVOR COURT



Ramsley Park



Mr. James McAuliffe
East Boulevard



George H CLUNE
MT Hope Avenue



Petham Road



MISS LAURA DAKE
NEWCASTLE ROAD